

# Benchline Drop in Bowls

## PRODUCT DESCRIPTION

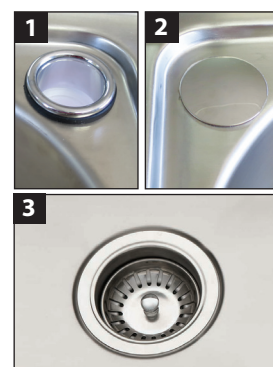
### Bowl:

- 45L Silk finish 304 Stainless Steel Square Bowl
- No tap hole and two  $\varnothing 42\text{mm}$  tap hole models available.
- Single bypass on 2 tap hole models <sup>1</sup>
- Chrome plated blanking plug with nut on 2 tap hole models <sup>2</sup>
- 90mm Chrome basket waste <sup>3</sup>
- Sink bench fixing clips
- Foam sink to bench seal rubber



### Capacity and dimensions:

	70L	45L	45L Slim	35L	35L Slim
<b>A</b> Overall Length	634	630	470	555	455
<b>B</b> Bowl Length	560	540	385	480	380
<b>C</b> Overall Width	560	470	630	455	555
<b>D</b> Bowl Width	480	385	540	380	480
<b>E</b> Overall Depth	325	230	230	220	220
<b>F</b> Corner Radius	R5	R40	R40	R40	R40
<b>Cut Out Dimensions</b> - - - - -					
<b>G</b> Length	609	610	450	535	435
<b>H</b> Width	535	450	610	435	535
<b>I</b> Corner Radius	R10	R25	R25	R50	R50



### Manufacturer's Warranty:

Stainless steel bowl: 25 years  
Plug and waste: 1 year



### Product codes:

71491 Benchline 35L 2TH Drop In Bowl  
73127 Benchline 35L NTH Drop In Bowl  
71248 Benchline 35L Slim Drop In Bowl

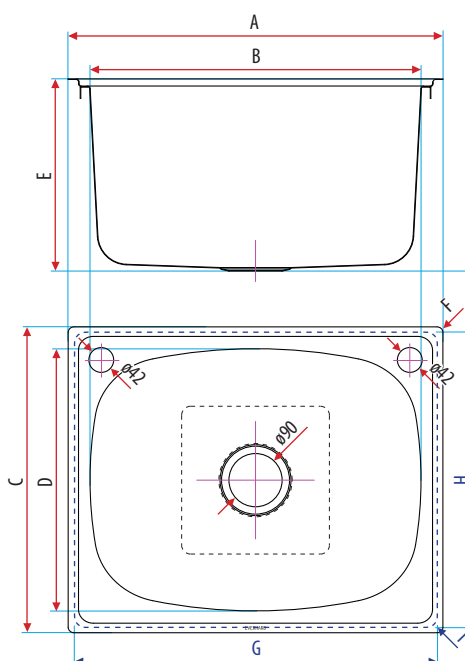
71245 Benchline 45L 2TH Drop In Bowl  
73126 Benchline 45L NTH Drop In Bowl  
71247 Benchline 45L Slim Drop In Bowl

73128 Benchline 70L 2TH Drop In Bowl

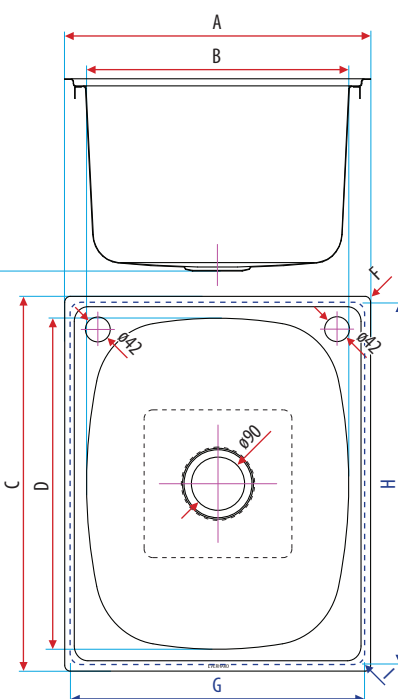


Benchline 70L

### Standard Benchline



### Slim Benchline



Disclaimer: While every care has been exercised in compiling and publishing the data contained in these pages, Everhard accepts no responsibility for errors or omissions and all information is believed to be correct at the time of production. Dimensions and volumes are nominal. Please check the exact product measurements prior to beginning installation. Everhard reserves the right to delete or alter items without notice. Further information on warranties is available at [www.everhard.com.au](http://www.everhard.com.au)