



PHOENIX

VIVID SLIMLINE OVAL

VESSEL MIXER

PRODUCT CODE: VV790 CHR
 FINISH: CHROME
 WELS: 6 STAR - 4.5 LT/MIN

INFORMATION:

TEMPERATURE RATING: MIN 1° - MAX 75°
 PRESSURE RATING: MIN 150 kPa - MAX 500 kPa

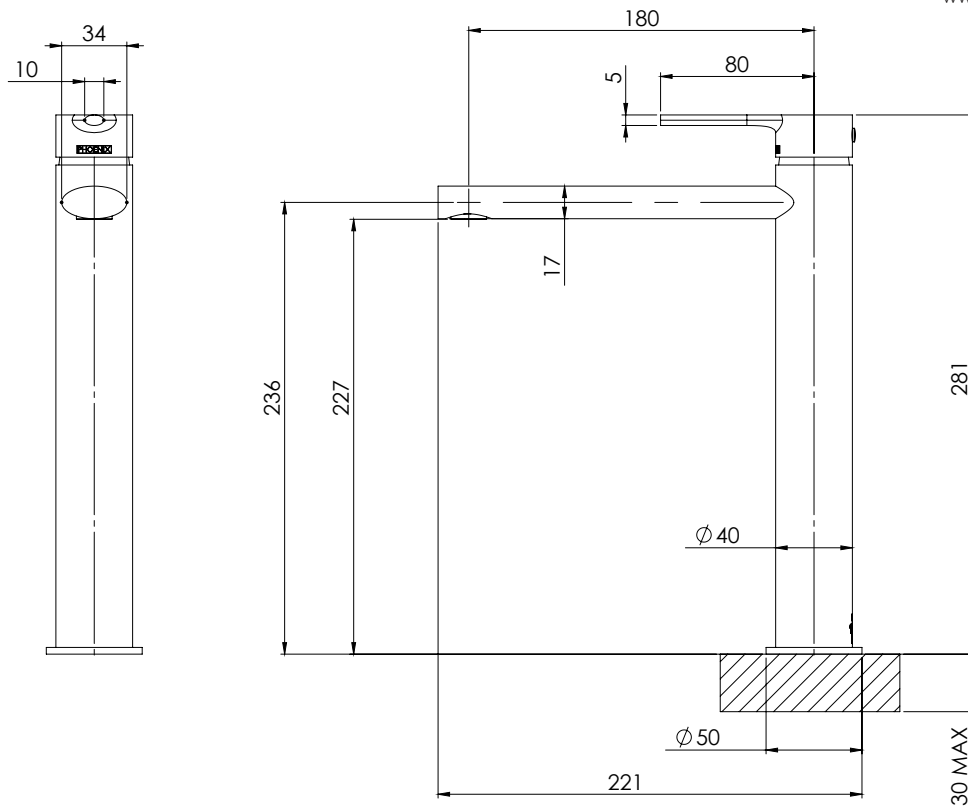


ALSO AVAILABLE IN:



CHROME MATTE BLACK

FOR MORE INFORMATION VISIT www.phoenixtapware.com.au



PLEASE [CLICK HERE](#) TO VIEW FULL WARRANTY

While we aim to ensure the specifications shown are correct at time of printing, Phoenix Tapware reserves the right to make modifications without prior notice. Always use the physical product measurements for mark-ups and roughing-in as the line drawing shown may differ from the actual product over time. All measurements are shown in millimetres.

www.phoenixtapware.com.au
03 9780 4200



PHOENIX

SPECIFICATIONS

VIVID SLIMLINE OVAL

VESSEL MIXER

PRODUCT CODE:

VV790 CHR

FINISH:

CHROME

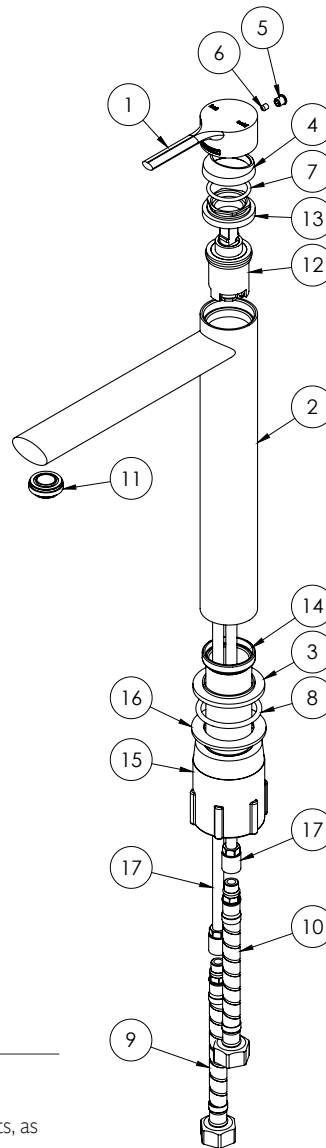
WELS:

6 STAR - 4.5 LT/MIN



PARTS LIST

1. OVAL BASIN MIXER HANDLE
2. MIXER BODY
3. MIXER PLATE
4. MIXER DOME
5. GRUB SCREW CAP M5
6. GRUB SCREW M4 X 5
7. O-RING 26X2.5MM
8. O-RING 39X3.5MM
9. FLEXIBLE HOSE (HOT)
10. FLEXIBLE HOSE (COLD)
11. AERATOR
12. 25MM CARTRIDGE
13. CARTRIDGE SLEEVE
14. MIXER TAIL
15. MIXER LOCKNUT
16. LOCKNUT GASKET
17. HOSE EXTENSION ASSEMBLY



MAINTENANCE AND CARE:

- Chrome plated surfaces should be cleaned with mild liquid detergent or soap and water:
- Do not use cream cleaners or citrus based cleaning products, as they are abrasive.
- Use of unsuitable cleaning agents may damage the surface. Any damage caused in this way will not be covered by warranty.

PACKAGING INCLUDES

- 1 x Vessel mixer
- 1 x 2.5mm Allen key
- 1 x Aerator key
- 1 x 450mm braided flexible cold hose
- 1 x 450mm braided flexible hot hose
- 1 x Installation instructions
- 1 x Warranty card

PLEASE [CLICK HERE](#) TO VIEW FULL WARRANTY

While we aim to ensure the specifications shown are correct at time of printing, Phoenix Tapware reserves the right to make modifications without prior notice. Always use the physical product measurements for mark-ups and roughing-in as the line drawing shown may differ from the actual product over time. All measurements are shown in millimetres.

www.phoenixtapware.com.au
03 9780 4200